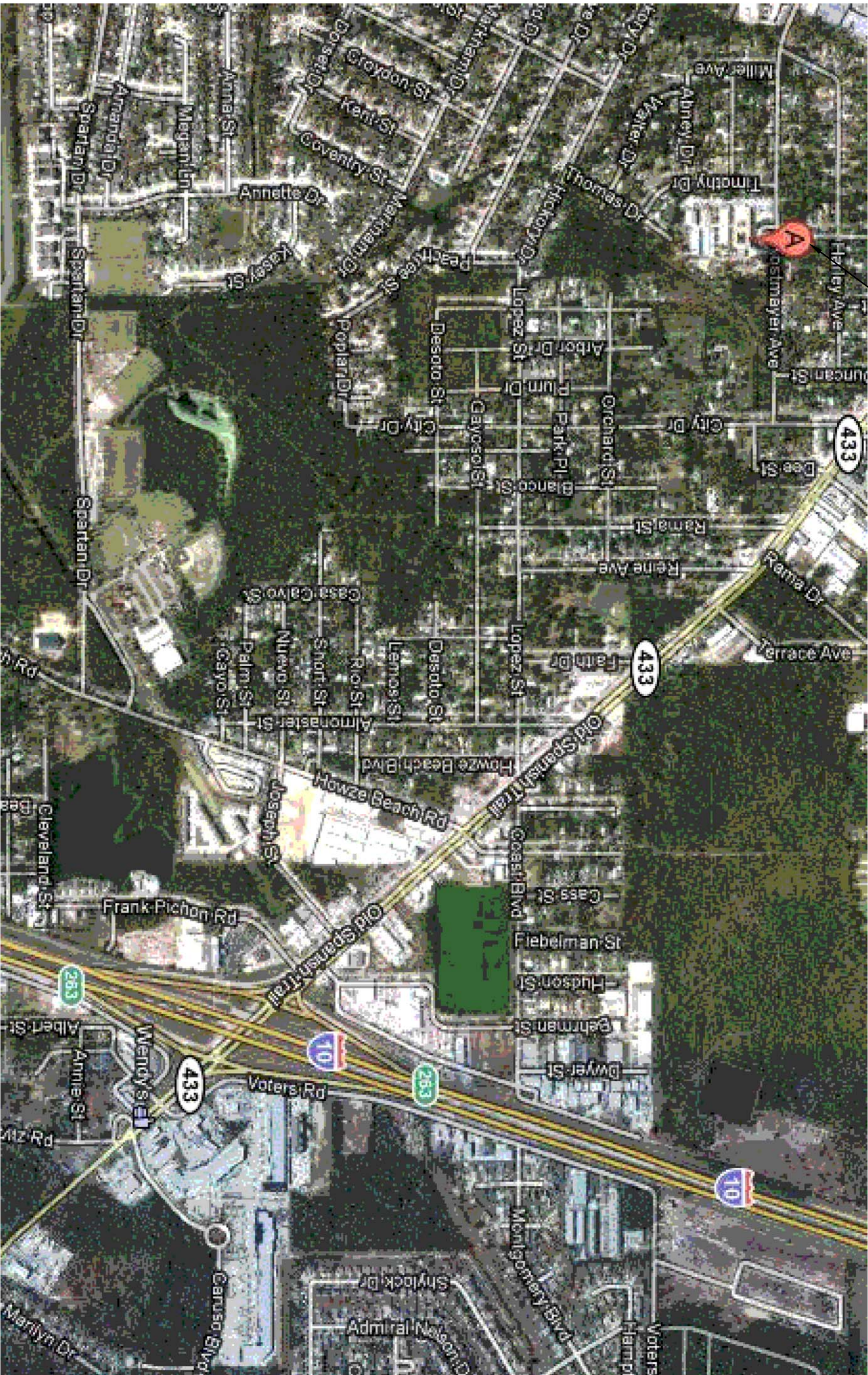


REROOFING OF
ABNEY ELEMENTARY SCHOOL
BLDG. B (#1978)
825 KOSTMAYER AVE.
SLIDELL, LOUISIANA
70458

INTERNATIONAL BUILDING CODE 2009

OCCUPANCY CLASSIFICATION:
EDUCATIONAL, GROUP E, (SEC 305)

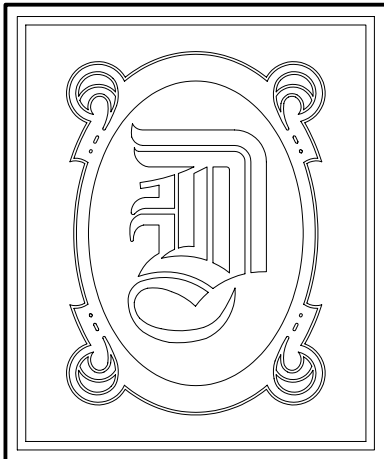
AREA OF WORK



VICINITY MAP
N.T.S.



DRAWING INDEX	
-	COVER SHEET
C-1	SITE PLAN
A-1	BLDG. B ROOF PLAN
A-2	BLDG. B DETAILS
A-2	BLDG. B PHOTOS



DAMMON ENGINEERING, INC.
1095 FLORIDA AVE. OFFICE: (985) 649-5832
SLIDELL, LA 70458 FAX: (985) 641-5950
WEBSITE: WWW.DAMMONENGINEERING.COM
EMAIL: DAMMONENG@BELLSOUTH.NET

DATE: 6-28-12
JOB NO. 2145

REROOFING OF
ABNEY ELEMENTARY SCHOOL
825 KOSTMAYER AVE.
SLIDELL, LA 70458